

creative shiny design

finitura decorativa all'acqua
ad effetto seta lucida



linea
Creative



creative shiny design spatolato 0.715.5387 (creative fondo 0.073.5387)



creative shiny design nuvola 0.715.5387 (creative fondo 0.073.5387)



creative shiny design lamina 0.715.5387 (creative fondo 0.073.5387)



creative shiny design rigato 0.715.5387 (creative fondo 0.073.5387)



creative shiny design pennellato 0.715.5387 (creative fondo 0.073.5387)



creative shiny design

finitura decorativa all'acqua ad effetto seta lucida
sheeny silk effect decorative finish (water based)

creative shiny design spatolato *spatula effect*



applicare **creative fondo** 0.073. in tinta
apply creative fondo 0.073. coloured



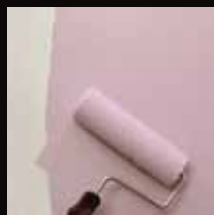
applicare uno strato di **creative shiny design**
apply a layer of creative shiny design



lavorare il prodotto con spatolate incrociate
work creative shiny design with a spatula in a criss-cross fashion.



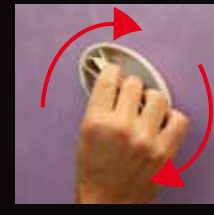
creative shiny design nuvola *cloud effect*



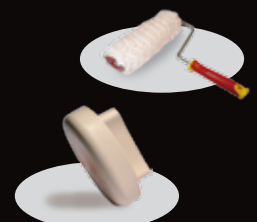
applicare **creative fondo** 0.073. in tinta
apply creative fondo 0.073. coloured



applicare uno strato di **creative shiny design**
apply a layer of creative shiny design



lavorare il prodotto con movimenti rotatori
work creative shiny design by creating circles.



creative shiny design lamina *lamato spot face effect*



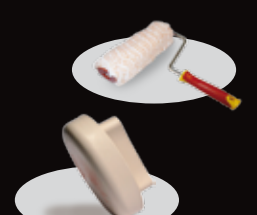
applicare **creative fondo** 0.073. in tinta
apply creative fondo 0.073. coloured



applicare uno strato di **creative shiny design**
apply a layer of creative shiny design



lavorare il prodotto con movimenti lineari
work the product by creating lineal movements



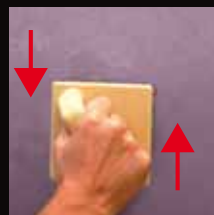
creative shiny design rigato *scuffed effect*



applicare **creative fondo** 0.073. in tinta
apply creative fondo 0.073. coloured



applicare uno strato di **creative shiny design**
apply a layer of creative shiny design



lavorare il prodotto con movimenti lineari
work the product by creating lineal movements



creative shiny design pennellato *brush effect*



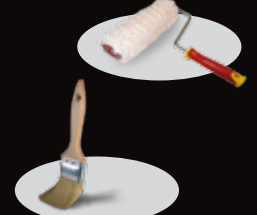
applicare **creative fondo** 0.073. in tinta
apply creative fondo 0.073. coloured



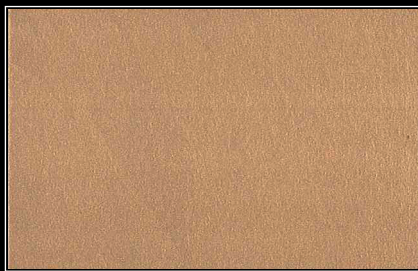
applicare uno strato di **creative shiny design**
apply a layer of creative shiny design



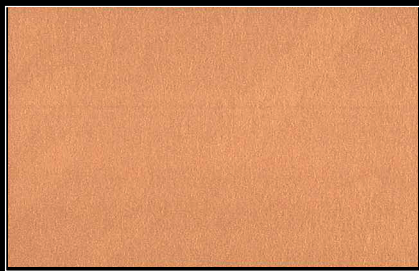
lavorare il prodotto con pennello scarico
work the product by scumbling



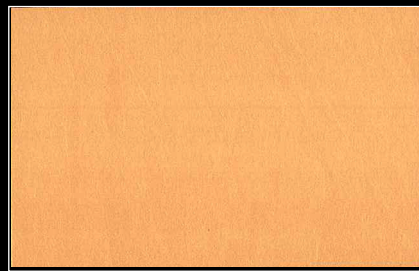
Per ottenere un'ottimale riuscita di ogni effetto, è opportuno lavorare il prodotto entro pochi minuti dalla sua stesura
Work the paint within a few minutes in order to optimize the final effect



6191 (creative fondo 0.073.6191)



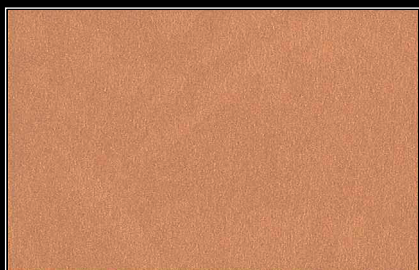
6219 (creative fondo 0.073.6219)



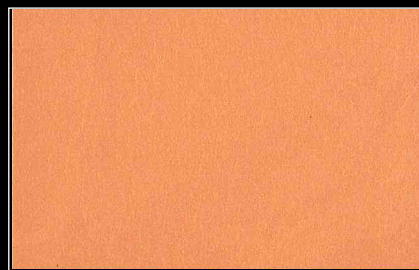
2245 (creative fondo 0.073.2245)



6227 (creative fondo 0.073.6227)



6244 (creative fondo 0.073.6244)



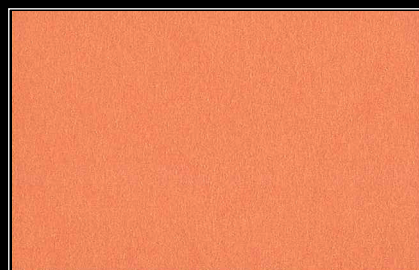
4159 (creative fondo 0.073.4159)



5292 (creative fondo 0.073.5292)



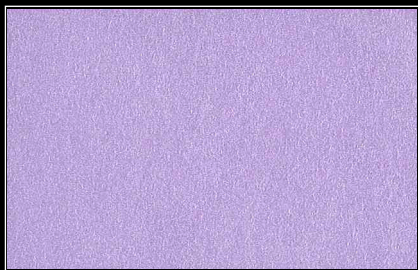
6321 (creative fondo 0.073.6321)



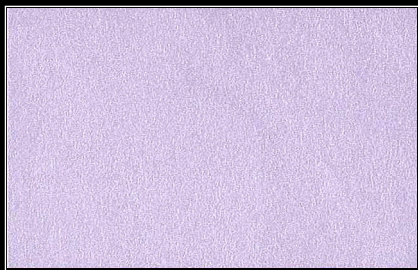
4247 (creative fondo 0.073.4247)



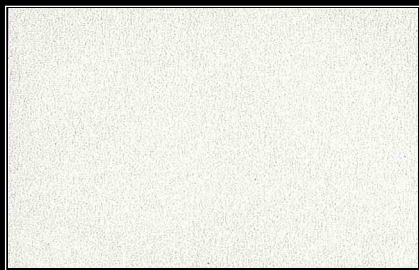
5323 (creative fondo 0.073.5323)



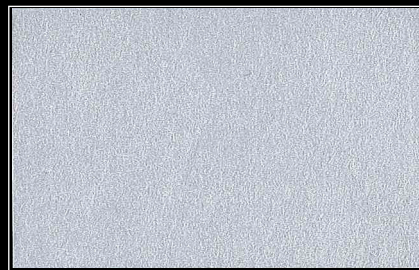
5498 (creative fondo 0.073.5498)



2390 (creative fondo 0.073.2390)



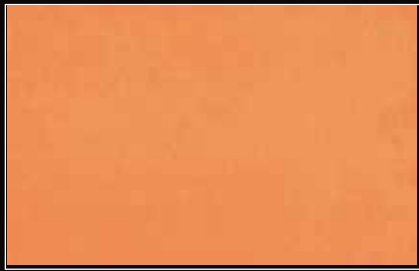
0200 (creative fondo 0.073.1010)



2198 (creative fondo 0.073.2198)

(BASE)

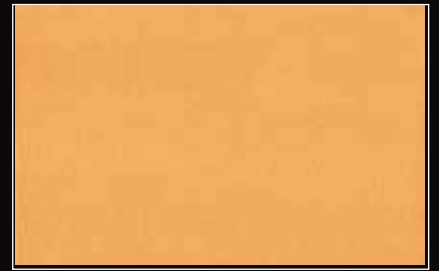
Per la naturale variabilità che deriva dalle diverse tecniche applicative, queste tinte non costituiscono un riferimento esatto, quindi la Nostra Società non si assume alcuna responsabilità in ordine ai risultati.



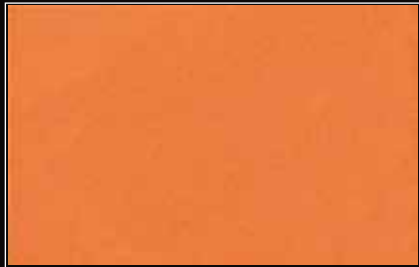
4166 (creative fondo 0.073.4166)



4209 (creative fondo 0.073.4209)



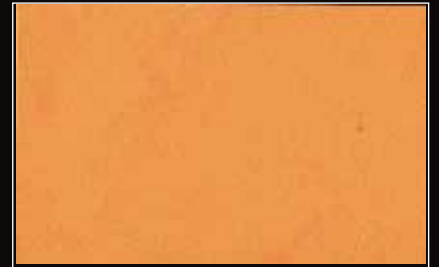
3170 (creative fondo 0.073.3170)



4301 (creative fondo 0.073.4301)



6242 (creative fondo 0.073.6242)



3213 (creative fondo 0.073.3213)



4284 (creative fondo 0.073.4284)



6315 (creative fondo 0.073.6315)



6488 (creative fondo 0.073.6488)

**creative shiny
design SILVER
0.715.0200**



5378 (creative fondo 0.073.5378)



5286 (creative fondo 0.073.5286)



9218 (creative fondo 0.073.9218)



2397 (creative fondo 0.073.2397)



2384 (creative fondo 0.073.2384)



9324 (creative fondo 0.073.9324)



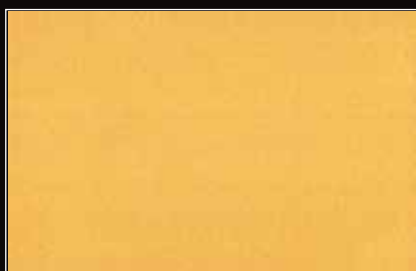
1192 (creative fondo 0.073.1192)



2237 (creative fondo 0.073.2237)



0400 (creative fondo 0.073.0400) (BASE)



3208 (creative fondo 0.073.3208)



7322 (creative fondo 0.073.7322)



3311 (creative fondo 0.073.3311)



3480 (creative fondo 0.073.3480)



6478 (creative fondo 0.073.6478)



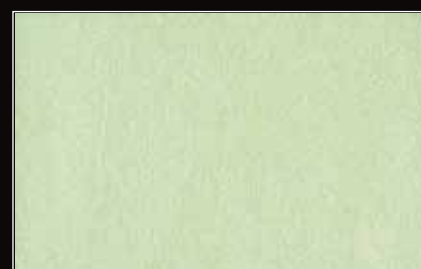
6366 (creative fondo 0.073.6366)



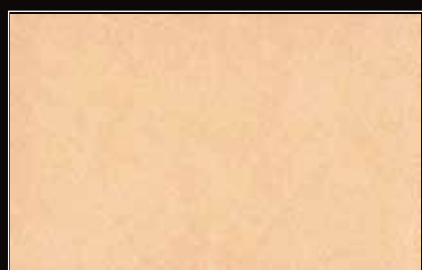
6385 (creative fondo 0.073.6385)



7311 (creative fondo 0.073.7311)



7394 (creative fondo 0.073.7394)



2382 (creative fondo 0.073.2382)



4196 (creative fondo 0.073.4196)



1199 (creative fondo 0.073.1199)



2239 (creative fondo 0.073.2239)



1344 (creative fondo 0.073.1344)



1241 (creative fondo 0.073.1241)



7319 (creative fondo 0.073.7319)



7352 (creative fondo 0.073.7352)



7368 (creative fondo 0.073.7368)



**creative shiny
design GOLD
0.715.0400**



7395 (creative fondo 0.073.7395)



7315 (creative fondo 0.073.7315)



7339 (creative fondo 0.073.7339)



7386 (creative fondo 0.073.7386)



8244 (creative fondo 0.073.8244)



8306 (creative fondo 0.073.8306)



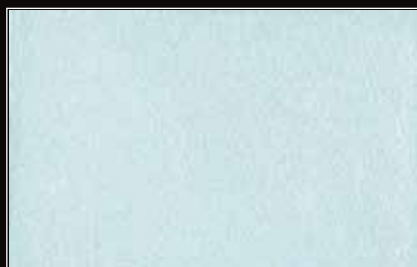
7377 (creative fondo 0.073.7377)



8499 (creative fondo 0.073.8499)



8393 (creative fondo 0.073.8393)



1246 (creative fondo 0.073.1246)



1353 (creative fondo 0.073.1353)



1381 (creative fondo 0.073.1381)

creative shiny design

finitura decorativa all'acqua ad effetto seta lucida
sheeny silk effect decorative finish (water based)

Modalità di applicazione

creative shiny design finitura decorativa all'acqua ad effetto seta lucida



PREPARAZIONE DEL FONDO

Per la preparazione del supporto utilizzare **creative fondo 0.073** in tinta nel medesimo codice colore di **creative shiny design**.

FINITURA

• effetto spatolato

- dopo aver atteso l'asciugatura del fondo in tinta, procedere alla stesura con spatola di **creative shiny design** non diluito e lavorarlo poi con spatolate incrociate.

• effetto nuvola

- dopo aver atteso l'asciugatura del fondo in tinta, procedere alla stesura con rullo di **creative shiny design** non diluito e lavorarlo poi con la **spatola creative setard 2.961.0067** con movimenti rotatori.

• effetto lamato

- dopo aver atteso l'asciugatura del fondo in tinta, procedere alla stesura con rullo di **creative shiny design** non diluito e lavorarlo poi con la **spatola creative setard 2.961.0067** con movimenti lineari lungo la stessa direzione.

• effetto rigato

- dopo aver atteso l'asciugatura del fondo in tinta, procedere alla stesura con rullo di **creative shiny design** non diluito e lavorarlo poi con la spazzola in plastica con movimenti lineari lungo la stessa direzione.

• effetto pennellato

- dopo aver atteso l'asciugatura del fondo in tinta, procedere alla stesura con rullo di **creative shiny design** non diluito e lavorarlo poi con pennello scarico.



pronto all'uso



circa 9 m²/l



famiglia 11 · classe A
Scheda Tecnica n° 137

Applications

creative shiny design sheeny silk effect decorative finish (water based)



PREPARATION OF THE SUBSTRATE

Use the same colour codes (**creative fondo 0.073** coloured & **creative shiny design 0.715**.) to prepare the substrate.

FINISH

• spatula effect

- allow the coloured primer to dry, use a spatula to apply a uniform layer of ready **creative shiny design** in a criss-cross fashion.

• cloud effect

- allow the coloured primer to dry, use a roller to apply ready **creative shiny design** working the product by creating circles with **creative setard spatula 2.961.0067**.

• lamato spot face effect

- allow the coloured primer to dry, use a roller to apply ready **creative shiny design** working the product by creating lineal movements (in the same direction) with **creative setard spatula 2.961.0067**.

• scuffed effect

- allow the coloured primer to dry, use a roller to apply ready **creative shiny design** working the product by creating lineal movements (in the same direction) with a plastic spatula.

• brush effect

- allow the coloured primer to dry, use a brush to apply ready **creative shiny design** working by scumbling.



ready to use



approx. 9 m²/l



family N° 11 · class A
TDS N° 137

ard • f.lli raccanello s.p.a.
industria vernici e smalti

1^a Strada, 13 · Z.I. Nord · 35129 PADOVA (Italy)
Tel. +39 049 80 600 00 · Fax +39 049 77 37 49
www.ard-raccanello.it
ardspa@ard-raccanello.it
pubblicita@ard-raccanello.it

